

# DV-III Ultra Rheometer

...for measuring viscosity and yield stress!

**Scintek Instruments LLC**

The "all-in-one" tool to easily predict a material's complete flow behavior

#### Displayed info:

- Viscosity (cP or mPa·s)
- Temperature (°C or °F)
- Shear Rate/Stress
- % Torque
- Speed/Spindle
- Step Program Status
- Math Model Calculations

#### 2600 Speeds

to characterize a wide range of flow behavior

#### Built-in RTD Temperature Probe

Accuracy:  $\pm 1.0\%$  of range  
Repeatability:  $\pm 0.2\%$

Bi-directional RS-232 PC interface provides optional computer control and automatic data gathering capability

Download custom test programs with Rheolader software (included with instrument)

Complete computer control using optional Rheocalc32 software lets you control all aspects of rheological testing directly from the computer

Analyze characteristics such as yield stress, flow curves, (mixing, pumping, spraying), leveling and recovery

Stand-alone programming: Enter test method steps, temperature requirements, start program, see results on built-in display

Built-in math models for data analysis in stand-alone mode. E.g. Casson, Bingham, Power Law



*scintek.com*

#### VISCOSITY RANGE cP(mPa·s)

#### SPEEDS

MODEL	Min.	Max.	RPM	Number of Increments
LVDV-IIIU	1 <sup>†</sup>	6M	.01-250	2.6K
RVDV-IIIU	100 <sup>††</sup>	40M	.01-250	2.6K
HADV-IIIU	200 <sup>††</sup>	80M	.01-250	2.6K
HBDV-IIIU	800 <sup>††</sup>	320M	.01-250	2.6K

<sup>†</sup> 1 cP achieved with UL Adapter accessory. 15 cP on LV with standard spindles.  
<sup>††</sup> Minimum viscosity is achieved with optional RV/HA/HB-1 spindle.  
M = 1 million K = 1 thousand cP = Centipoise mPa·s = Millipascal/seconds

## BROOKFIELD VISCOMETERS

United States: T: 800.628.8139 or 508.946.6200 F: 508.946.6262 [www.brookfieldengineering.com](http://www.brookfieldengineering.com)  
United Kingdom: T: 01279 451774 F: 01279 451775 [www.brookfield.co.uk](http://www.brookfield.co.uk)

## What's Included?

Instrument  
 6 spindles (RV/HA/HB)  
 or 4 spindles (LV)  
 RheoLoader software ▶  
 EZ-Yield Software ▶  
 RTD Temperature Probe  
 Spindle Guard Leg\*  
 Lab Stand Base  
 Carrying Case

\*Not applicable to HA or HB versions

## Optional Accessories

Rheocalc32 Software ▶  
 NEW Ball Bearing Suspension  
 Viscosity Standards  
 RV/HA/HB-1 Spindle  
 Temperature Bath  
 Small Sample Adapter  
 UL Adapter  
 Thermosel  
 Helipath Stand with T-bar Spindles  
 Spiral Adapter  
 DIN Adapter  
 Quick Connect/Extension Links  
 Vane Spindles



scintek.com

### DV-III Ultra CP

The DV-III Ultra is available in a Wells/Brookfield Cone & Plate Version



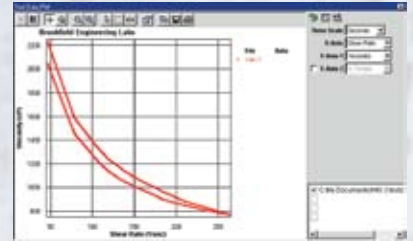
Brookfield Engineering Laboratories, Inc.

11 Commerce Boulevard  
 Middleboro, MA 02346-1031 USA  
 T: 800.628.8139 or 508.946.6200 F: 508.946.6262  
 W: www.brookfieldengineering.com

## RheoLoader Software Included

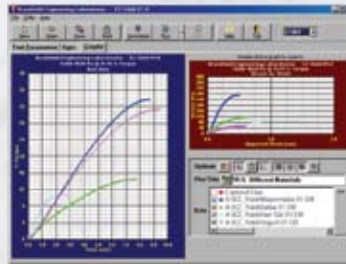
Customize your test criteria for routine product QC

This exclusive Brookfield software allows you to create customized programs for your instrument, each with as many as 50 commands. Once a program is downloaded from a host computer, comprehensive viscosity tests can be run automatically in stand-alone mode.



## EZ-Yield Software Included

Yield tests can be performed with EZ-Yield software and vane spindles.



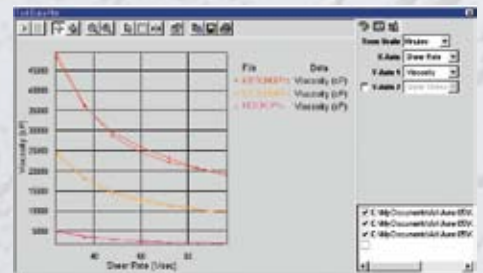
EZ-Yield Test Plots for Multiple Samples

	TORQUE RANGE		SHEAR STRESS RANGE	
			Pa	dyne/cm <sup>2</sup>
LV	Contact Brookfield			
RV	.5-100		5-1K	
HA	1-200		10-2K	
HB	4-800		40-8K	
5xHB	20-4K		200-40K	

## Rheocalc32 Software Optional

Get total control of your instrument and test parameters

Automatically control and collect data with Rheocalc32 and a dedicated computer. Rheocalc32 can analyze data, generate multiple plot overlays, print tabular data, run math models and perform other time-saving routines. Data can be saved in the program or exported to Excel.



## Applications

Consider application and viscosity range when selecting model (LV, RV, HA, HB)

### LV SERIES – LOW VISCOSITY

Adhesives (solvent base)  
 Biological Fluids  
 Chemicals  
 Dairy Products  
 Inks  
 Juices  
 Oils / Solvents  
 Pharmaceuticals  
 Polymer Solutions

### RV SERIES – MEDIUM VISCOSITY

Adhesives (hot melt)  
 Asphalt (SHRP)  
 Ceramic Slurries  
 Food Products  
 Gums  
 Ointments / Creams  
 Paints / Inks / Coatings  
 Paper Pulp  
 Shampoos / Lotions

### HA/HB SERIES – HIGH VISCOSITY

Caulking Compounds / Putty  
 Chocolate  
 Epoxies  
 Inks (ballpoint, offset, lithographic)  
 Pastes  
 Peanut Butter  
 Roofing Compounds  
 Sealants  
 Tars

  
**Scintek Instruments**  
 We deliver science  
 Your single source of Equipment for Science,  
 Industry & Research  
 9326 Brandon St. Manassas Park, VA 20111, U.S.A.  
  
 (571) 426-3598, (571) 426-1023, (703) 222-1245  
 sales@scintek.com, http://www.Scintek.com