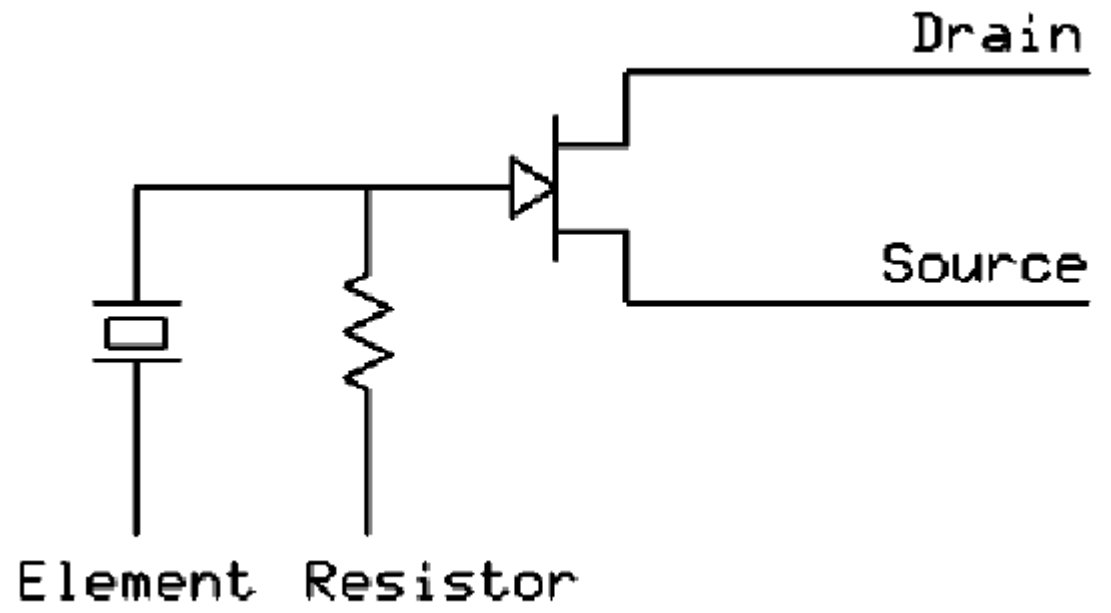
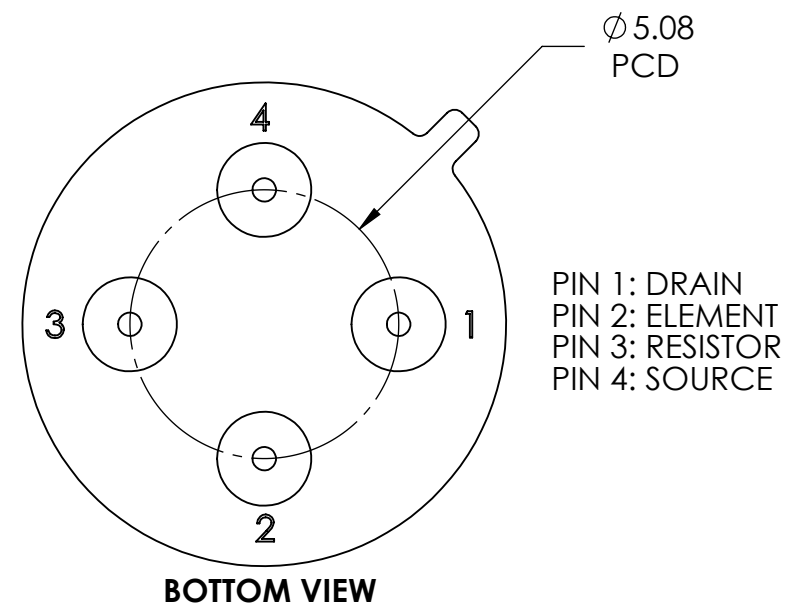
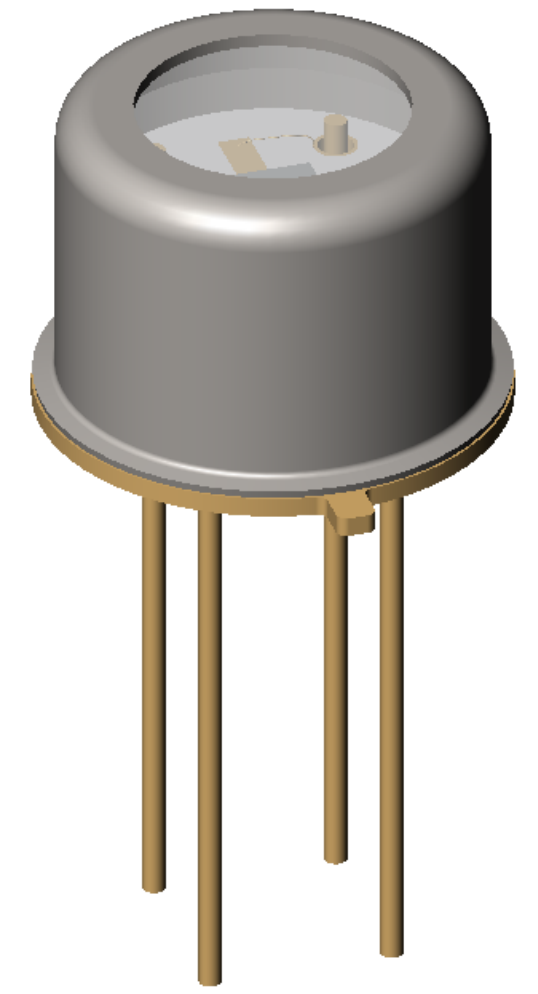
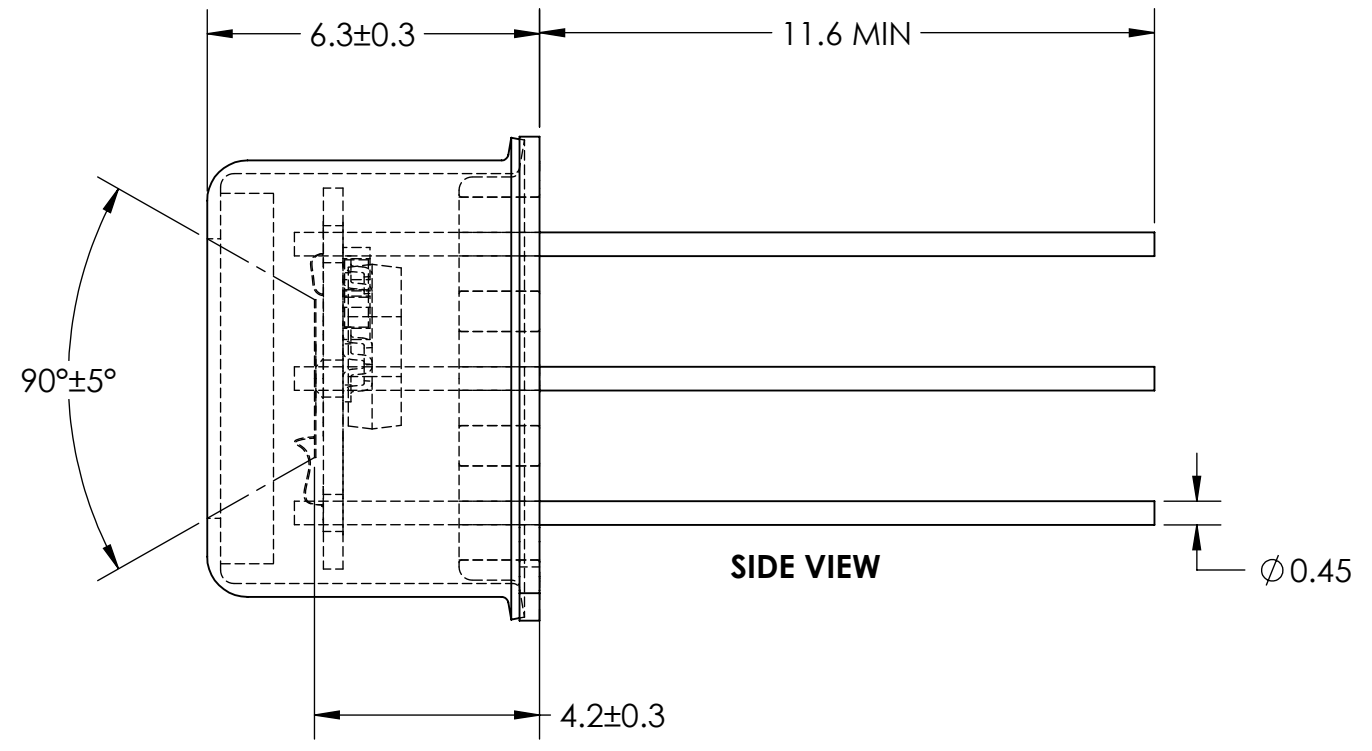
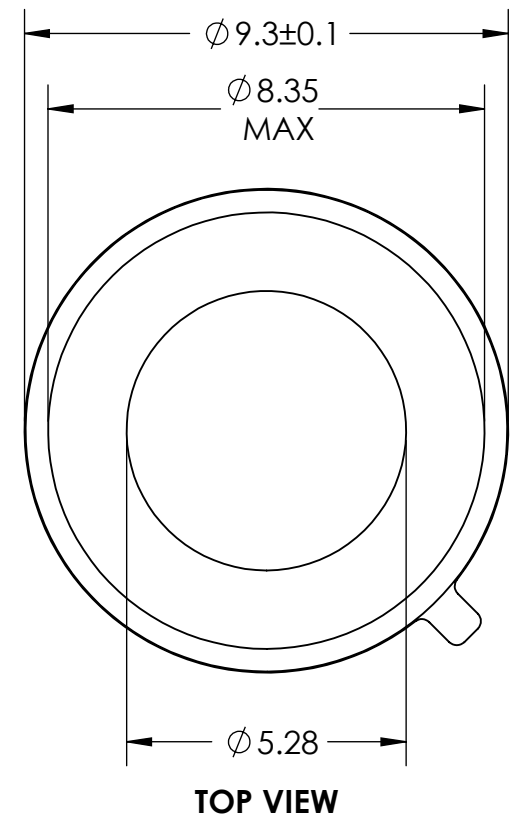


LCPG REVISIONS					
REV.	DCN	ZONE	DESCRIPTION	DATE	ENG APPROVAL
A			Release	2/21/18	JJ
B			XTAL Height Change/FOV	10/16/18	JJ



Recommended Supply Voltage: +9V
Maximum Gate-Drain, Gate-Source Voltage -40V



SCINTECK INSTRUMENTS

PYRO GROUP, INC.
PROPRIETARY AND CONFIDENTIAL

THIS DOCUMENT CONTAINS INFORMATION. NO PART MAY BE REPRODUCED, USED IN ANY FORM, OR STORED ELECTRONICALLY WITHOUT THE WRITTEN PERMISSION

UNLESS OTHERWISE SPECIFIED:	
DIMENSIONS ARE IN MM (IN)	DRAWN
TOLERANCES:	CHECKED JJ 10/10/10
ANG: MACH $\pm 0^\circ 30'$ BEND $\pm 2^\circ$	ENG APPR. - -
DECIMALS .X $\pm .1$	MFG APPR. - -
.XX $\pm .05$	Q.A. - -
.XXX $\pm .005$	
HOLE ϕ .XX $\pm .01$	
INTERPRET GEOMETRIC TOLERANCING PER: ASME Y14.5M	
MATERIAL N/A	PERP \perp .003/IN
	STRAIGHTNESS \parallel .005/IN
	FLATNESS \square .005/IN
	THREADS:
FINISH N/A	EXTERNAL - CLASS 2A
	INTERNAL - CLASS 2B
NEXT ASSY	USED ON
APPLICATION	DO NOT SCALE DRAWING

PART NO.	DXXXX-1300-XX	
SIZE B	DWG. NO. DXXXX-1300-XX	REV B
OLD PART NO.		
SCALE: 7:1	WGT: 0.00 LBS	SHEET 1 OF 1