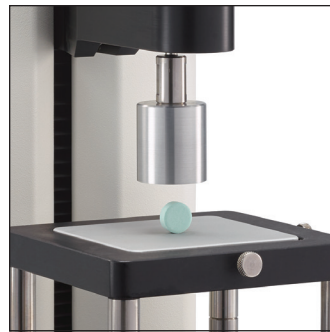


CTX™ Accessories

We have many more fixtures and accessories which are not shown here, and all are compatible on the CTX and CT3 Texture Analyzers.

- C COSMETIC
- F FOOD
- G PACKAGING
- P PHARMACEUTICAL
- T TENSION

AACC Spec Probe



To measure the strength of your tablets, the bonding forces between active ingredients and excipients. Fixture Base Table required. TA-AACC36 P

Bi-Layer Shear Fixture



Measures shear strength by cutting a two-part tablet or capsule using a guillotine blade. Fixture Base Table required. TA-BLS P

Multiple Probe Assembly



Consisting of nine 3mm probes and base plate designed to hold nine small samples of irregular geometry. Base Table required. TA-JMPA P

Syringe Test Fixture



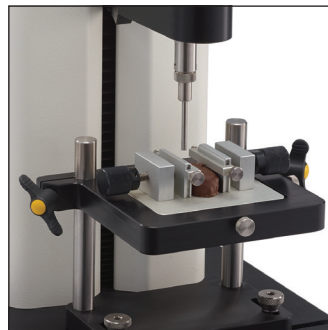
For measuring the force required to push or pull syringe plunger. Important to all syringe markets. Base Table required. TA-STJ P

General Peeling Jig



Measures the adhesive strength needed to remove the lid from a sealed container at 0°, 45°, and 90° angles. TA-GPJ T

Adjustable Vice Fixture



For holding small samples for puncture test. Good for jelly beans, gum drops, etc. Rotary Base Table required. TA-AVJ T F G

Dual Grip Fixture



For tensile testing of thin films or integrity of seals for packaging. TA-DGF T P G

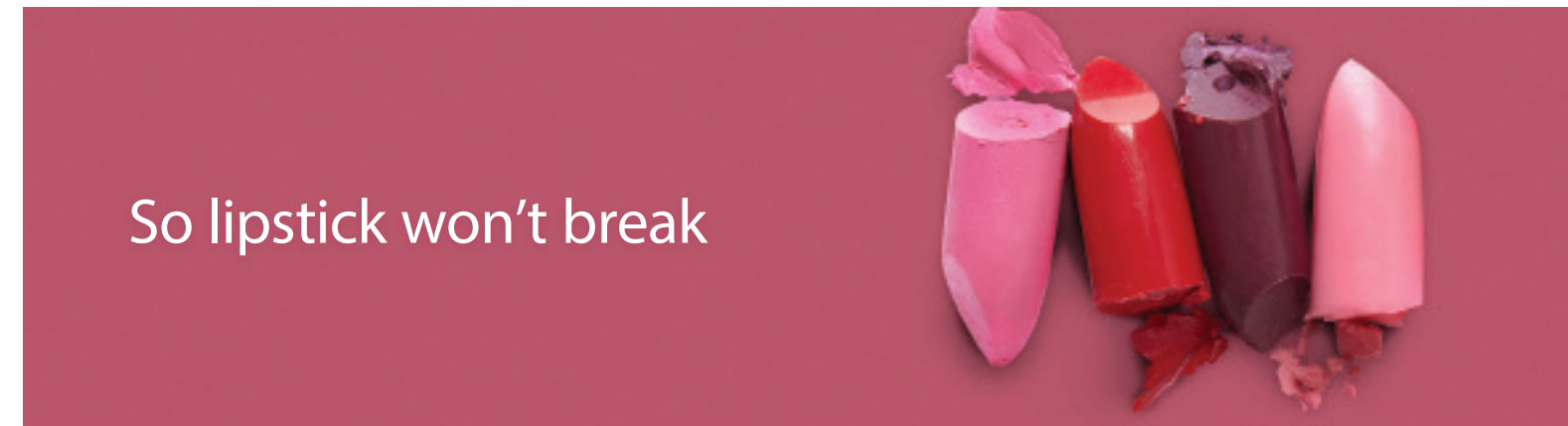
Sliding Friction Jig



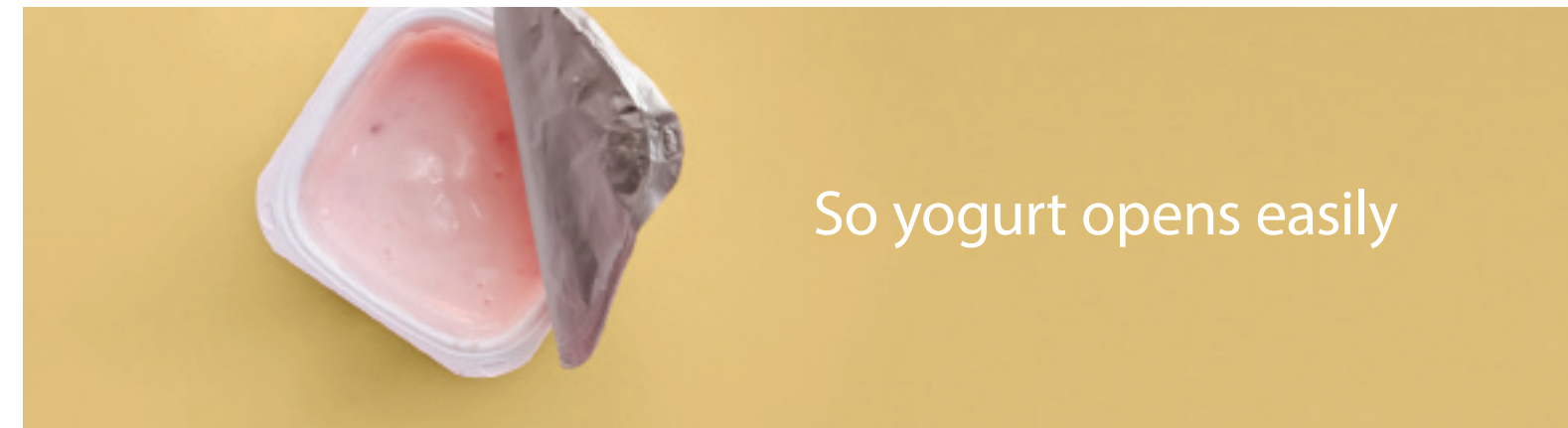
Measures the coefficient of friction for packaging materials according to ASTM D1894. TA-SFJ T G

Quality, controlled.

You put a lot of effort into your product. We make sure your customers don't have to.



So lipstick won't break



So yogurt opens easily



So pills won't crumble

The **New** CTX™ Texture Analyzer

Compression and tension testing for rapid QC analysis

The CTX Texture Analyzer is AMETEK Brookfield's new advanced model for the compression/tension testing of materials. It brings an exciting new dimension of quick, efficient testing to busy labs that need to improve productivity while maintaining quality.

The CTX usability features allow for easy set up to get you up and running quickly. Whether you are testing the consistency of pills and tablets, the peel ability of a yogurt lid, or the strength of lipstick, our new CTX will meet your ever-growing testing needs.

The addition of TexturePro Software makes the CTX ideal for R&D labs performing material evaluation/characterization tests. It also is great in QC applications where data can be sent or saved in multiple formats.



What's New?

FLEXIBILITY - Interchangeable load cells for optimal flexibility (eight choices ranging from 100g to 100kg). Easy to use standalone operation with integrated data analysis.

FUNCTIONALITY - Extended beam travel up to 280mm for longer reach testing. Dampened, standard and high response filtering options provide flexibility in evaluating sample behavior.

SPEED - Faster travel means faster testing

PRECISION - 500 Hz data output rate captures the precise moment there is a change to your sample. Deflection compensation ensures distance accuracy at full load range.

Optional Accessories

The CTX has a wide variety of probes, fixtures for testing broad categories of packaging materials, foods of all types, cosmetics, pharmaceuticals, and mechanical devices. AMETEK Brookfield can also custom design a fixture and probe for most applications.

TexturePro Software
 In Standard and Advanced Versions
 Advanced for 21CFR Part 11 Compliance
 Temperature Probe
 Bubble Level
 Calibration Weight Set
 Gelatin Bath System for Gel Conditioning
 Bloom Jar - industry approved

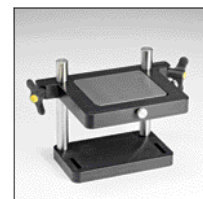
CTX with TA-AACC36 to measure the strength of your tablets, the bonding forces between active ingredients and excipients



TA-RT-KIT
Rotary Base Table



TA-BT-KIT
Fixture Base Table



TA-ABT-KIT
Adjustable Base Table

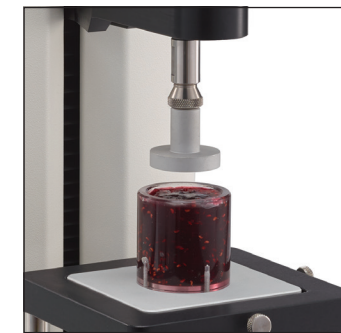
CTX™ Accessories

For a wide range of tests

While many CTX accessories have multiple applications, some are particularly useful for specific industries. The following color coded icons are used here to identify these industries.

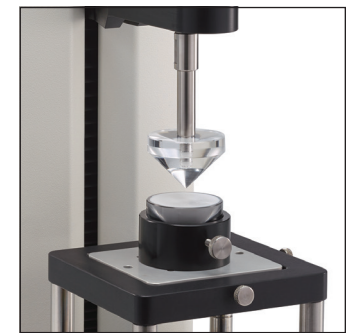
- C COSMETIC
- F FOOD
- G PACKAGING
- P PHARMACEUTICAL
- T TENSION

Dual Extrusion Cell



For either forward or back extrusion of fruit puree, pudding, yogurt or similar products. Fixture Base Table required. TA-DEC C F P

Spread Test Fixture



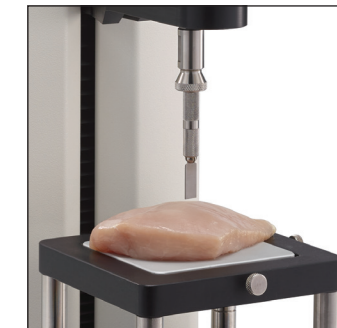
Quantifies the spread force of a material. Comes with 1 male cone probe, 5 five samples cups and 1 sample cup holder. Base Table required. TA-STF C F P

1mm Shear Blades



For cutting-shear test: meat, fish, sausage, etc. TA-SBA-WB-3 option for 3mm blades. Fixture Base Table required. TA-SBA-WB-1 F

Shear Blade



Used for cutting tests, especially meat, poultry, fish or similar products. Fixture or rotary base table recommended. TA-52 MOHRS F

Three Point Bend Fixture



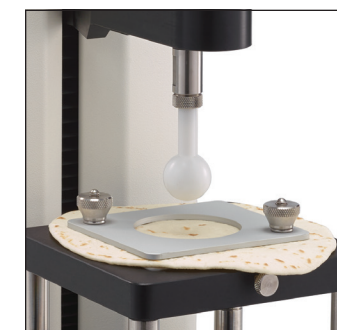
Is used with TA7 blade from general probe kit. Small scale version TA-JTPB is available. Fixture Base Table required. TA-TPB F

Compression Top Plate



For applying uniform compression forces on samples up to 4x6 inches (10x15cm) Fixture Base Table required. TA-CTP F

Dough Extensibility Fixture



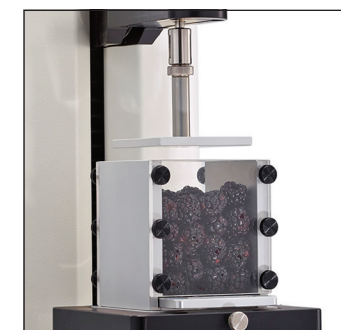
For holding sheet of raw dough or flat bread to measure breaking point of stretched sample. Ball Probe not included. Fixture Base Table required. TA-DE F

Noodle Tensile Fixture

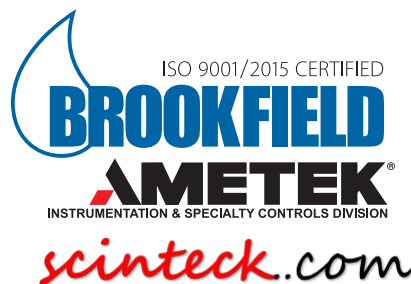


For evaluating noodle quality by stretching with tension test. Fixture Base Table required. TA-NTF F T

Ottawa Cell (447cc)



For bulk compression to determine hardness and crispness of cereals, vegetables or fruits. Fixture Base Table required. TA-OC-002 F



Continued on back...